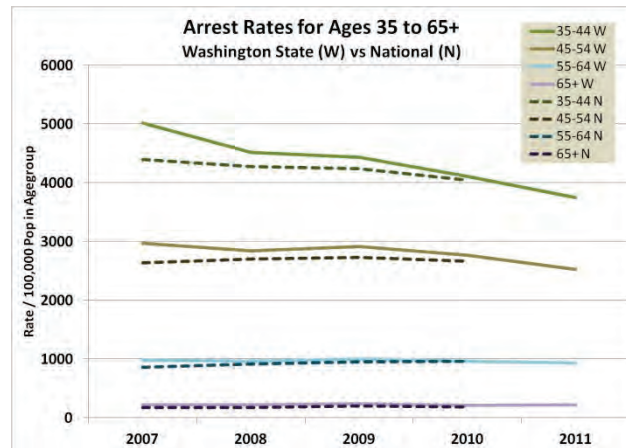
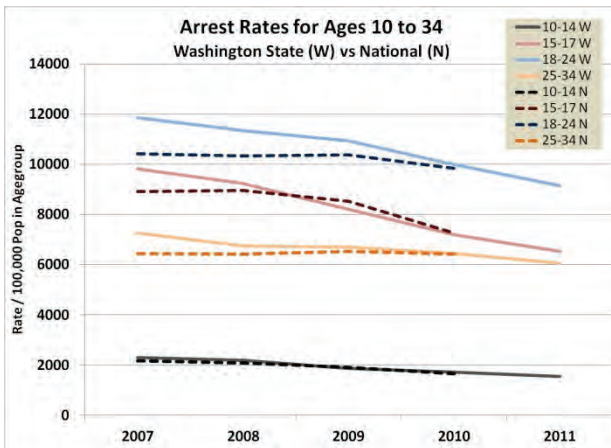
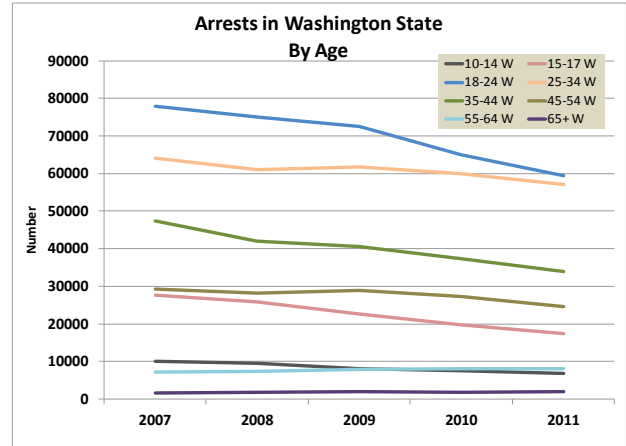
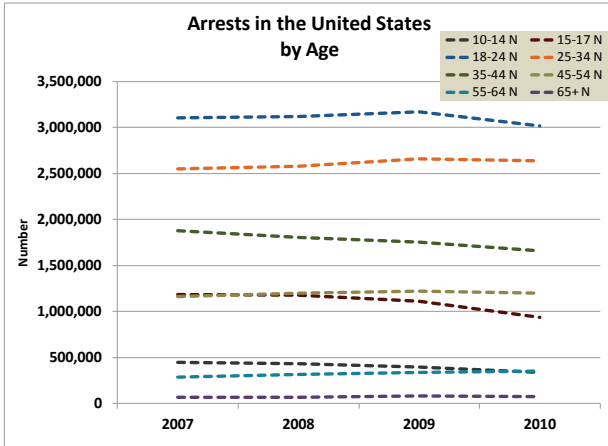


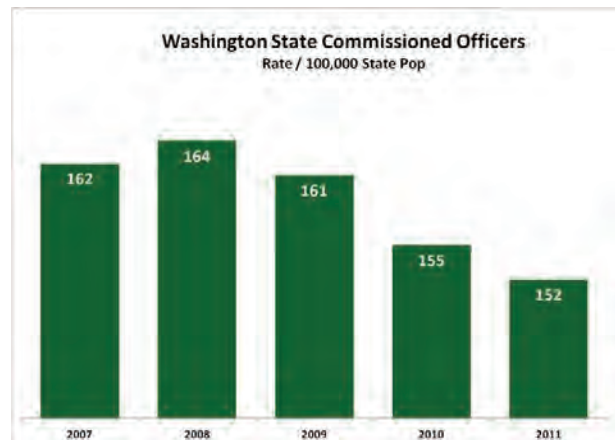
Law Enforcement

In Washington, arrests increased between 2007 and 2011 for “55-64” and “65+” age groups. Nationally, arrests increased for “25-34”, “45-54”, “55-64” and “65+” age groups.

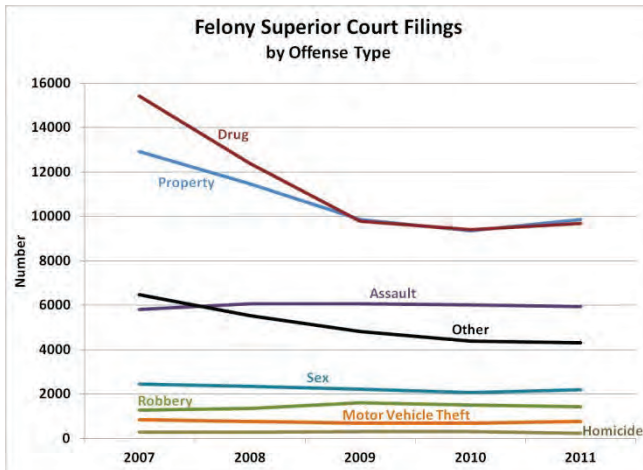


Arrest rates in Washington for ages 10 through 34 have decreased at a slightly faster pace than those at the national level. Arrest rates in Washington decreased for ages 35 and older. Arrest rates in the United States decreased for ages 35 to 44 and increased for ages 45 and older.

Between 2007 and 2011, the rate of commissioned officers decreased by 6% in Washington State. Whether this decrease impacts the number of officers on the street or not depends upon the jurisdiction.

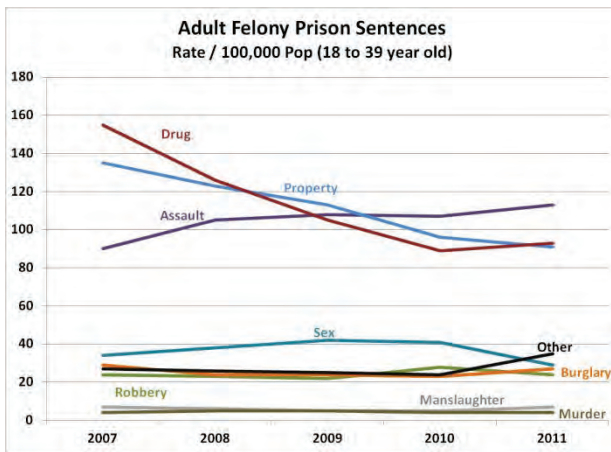


Courts



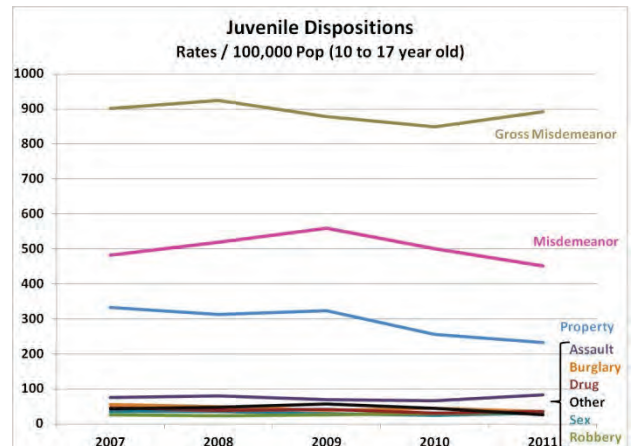
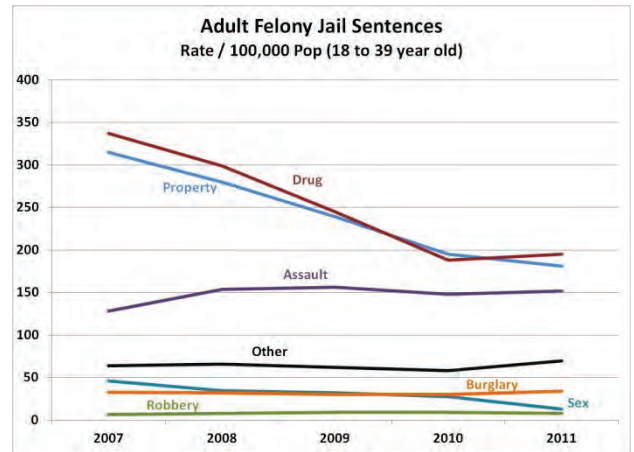
Only Superior Court filings for Assault and Robbery increased between 2007 and 2011 (2% and 11% respectively), all other offense types decreased by an average of 22%.

Likewise, the rate of jail sentences for Assault and Robbery increased between 2007 and 2011. Property, Drug and Sex offenses decreased considerably. While Sex offenses had been decreasing already, the marked decrease between 2010 and 2011 is likely due to a legislative change that no longer considers initial Failure to Register crimes as sex offenses. Those offenses would be categorized under Other.

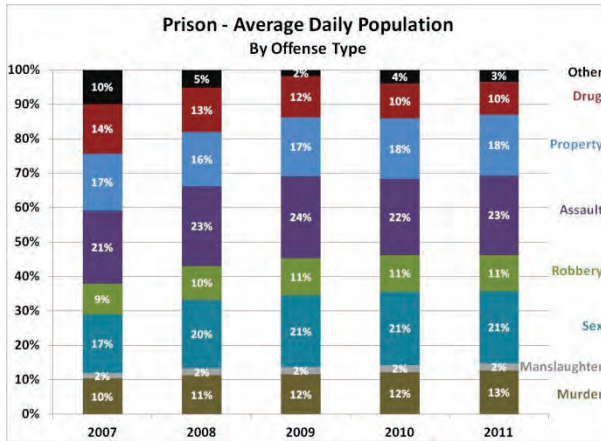


The only rates for prison offense types that increased were Assault and Other. The rest either remained the same or decreased. As with jail sentence rates, Property and Drug offense rates decreased considerably between 2007 and 2011.

Rates of juvenile dispositions in 2011 are less than what they were in 2007 with the exception of Robbery and Assault offenses which increased by 23% and 11%, respectively.

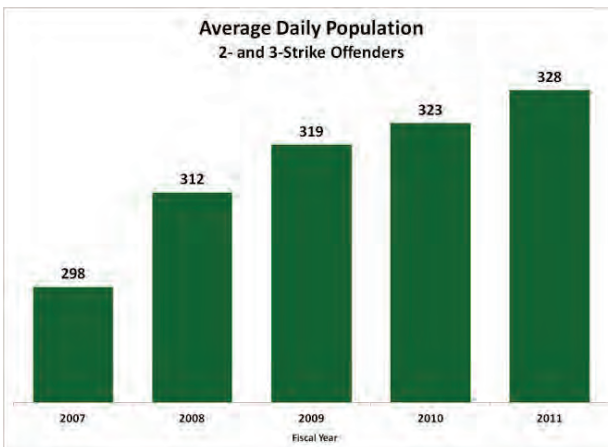


Incarceration

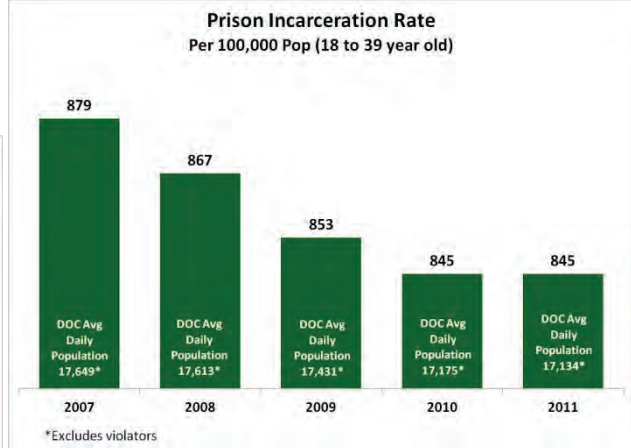
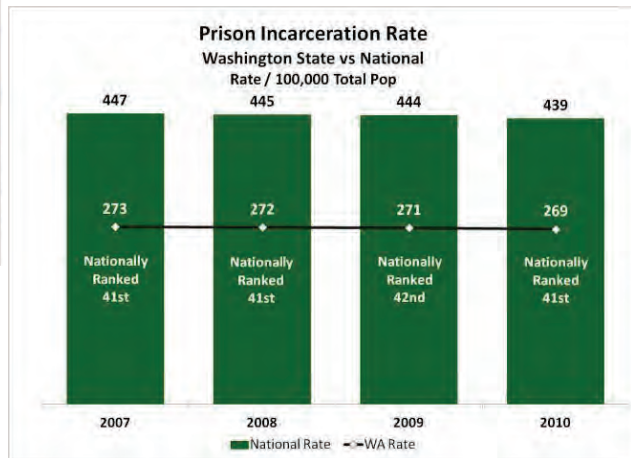


The percentage of inmates whose current offense is for a Drug or Other offense has decreased between 2007 and 2011 by 33% and 66%, respectively.

According to the Bureau of Justice Statistics, their calculation of Washington State's incarceration rate* has consistently been lower than the national average.



The distribution of offense types within the prison population has changed over the years. It shows an increasing proportion of violent and person offenses and decreasing proportion of non-violent offenses.



In Washington, the general definition of the at-risk population is anyone between 18 and 39 years of age. Using that total as the denominator, Washington's incarceration rate shows a decrease in the past five years.

Offenders sentenced under the 2- and 3-strike laws spend the rest of their lives in prison. It is logical that this population would continue to increase over time.

* Incarceration rate as defined by the Bureau of Justice Statistics is the number of inmates held in custody per 100,000 US residents. In calculating a state's incarceration rate, the population of the entire state is used as the denominator.

Sex Offenders*

It is not known how many victims of sexual assault exist because not everyone seeks services.

In the past five years, nearly half of victims who sought services through Office of Crime Victims Advocacy programs indicated in a survey that they knew the perpetrator. Only slightly more than half of those victims responded to that survey question, therefore, the percentage of victims who knew their perpetrator is likely to be higher.

	2007	2008	2009	2010	2011
Number of sexual assault victims who received services through Office of Crime Victims Advocacy programs	11514	12313	12957	13296	13020
Of those above, the number who responded to survey question about perpetrator relationship	6599 57.3%	6609 53.7%	7131 55.0%	7860 59.1%	7666 58.9%
Of those above, the number who responded that they knew the perpetrator	5988 90.7%	6048 91.5%	6576 92.2%	7254 92.3%	7082 92.4%

The Washington Association of Sheriffs and Police Chiefs houses Washington's Offender Watch program. This program is a management and community notification tool related to registered sex offenders.

As of July 3, 2012, Offender Watch data shows the distribution of active registered sex offenders in the state.

	Active Registered Sex Offenders	
Total Number	18083	100%
Level III	1468	8%
Level II	3156	17%
Level I	12709	70%
Other	750	4%

* Sex offender dashboard is courtesy of the Washington State Sex Offender Policy Board (www.ofm.wa.gov/sgc)